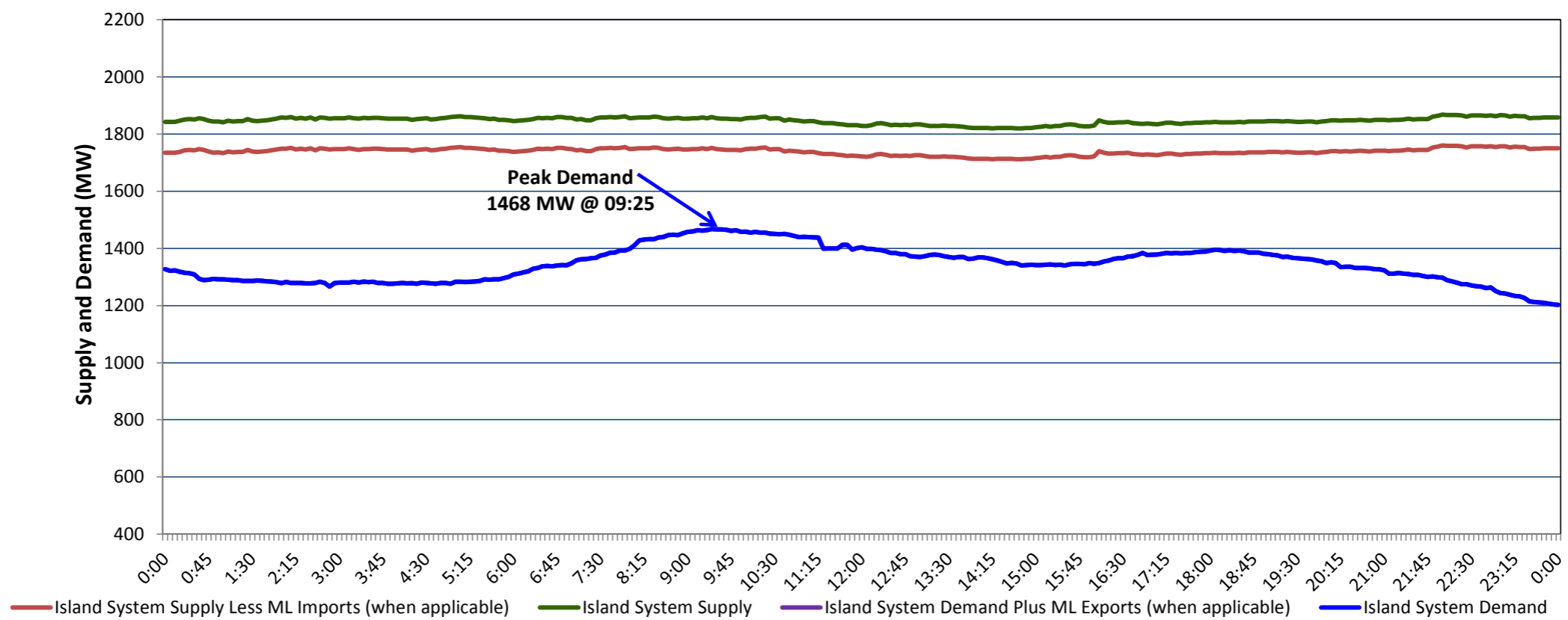


**Newfoundland Labrador Hydro (NLH)
Supply and Demand Status Report Filed Monday, February 26, 2018**

**Section 1
Island Interconnected System Supply, Demand & Exports
Actual 24 Hour System Performance For Saturday, February 24, 2018**



Supply Notes For February 24, 2018

1,2

- A As of 2115 hours, January 04, 2018, Stephenville Gas Turbine available at 25 MW (50 MW).
- B As of 0810 hours, February 18, 2018, Holyrood Unit 3 available at 108 MW (150 MW).
- C As of 0829 hours, February 22, 2018, Holyrood Unit 2 available at 108 MW (170 MW).
- D As of 1659 hours, February 22, 2018, Holyrood Unit 1 unavailable 140 MW (170 MW).

**Section 2
Island Interconnected Supply and Demand**

| Sun, Feb 25, 2018 | Island System Outlook ³ | | Seven-Day Forecast | Temperature (°C) | | Island System Daily Peak Demand (MW) | |
|--|------------------------------------|--------|------------------------------|------------------|---------|--------------------------------------|-----------------------|
| | | | | Morning | Evening | Forecast | Adjusted ⁷ |
| Available Island System Supply: ⁵ | 1,888 | MW | Sunday, February 25, 2018 | -10 | -9 | 1,555 | 1,446 |
| NLH Generation: ⁴ | 1,310 | MW | Monday, February 26, 2018 | -9 | -4 | 1,605 | 1,382 |
| NLH Power Purchases: ⁶ | 260 | MW | Tuesday, February 27, 2018 | -2 | -2 | 1,435 | 1,327 |
| Maritime Link Imports: | 108 | MW | Wednesday, February 28, 2018 | -1 | -1 | 1,450 | 1,342 |
| Other Island Generation: | 210 | MW | Thursday, March 01, 2018 | -1 | 1 | 1,320 | 1,214 |
| Current St. John's Temperature & Windchill: | -10 °C | -20 °C | Friday, March 02, 2018 | -1 | -1 | 1,355 | 1,248 |
| 7-Day Island Peak Demand Forecast: | 1,605 | MW | Saturday, March 03, 2018 | 0 | -1 | 1,290 | 1,184 |

Supply Notes For February 25, 2018

3

- E At 0419 hours, February 25, 2018, Upper Salmon Unit unavailable (84 MW).

- Notes:
1. Generation outages for running and corrective maintenance are included. These are not unusual for power system operations. They generally do not impact customer supply. The power system operators schedule outages to system equipment whenever possible to coincide with periods when customer demands are low and sufficient supply reserves are available. However, from time to time equipment outages are necessary and reserves may be impacted.
 2. Due to the Island System having no synchronous connections to the larger North American grid, when there is a sudden loss of large generating units some customer's load must be interrupted for short periods to bring generation output equal to customer demand. This automatic action of power system protection, referred to as under frequency load shedding, is necessary to ensure the integrity and reliability of system equipment. Under frequency events typically occur 5 to 8 times per year on the Island Interconnected System and the resultant customer load interruptions are generally less than 30 minutes.
 3. As of 0800 Hours.
 4. Gross output including station service at Holyrood (24.5 MW) and improved NLH hydraulic output due to water levels (35 MW).
 5. Gross output from all Island sources (including Note 4).
 6. NLH Power Purchases include: CBPP Co-Gen, Nalcor Exploits, Rattle Brook, Star Lake, Wind Generation, Vale capacity assistance (when applicable).
 7. Adjusted for CBP&P, Vale and Praxair interruptible load, Maritime Link Exports and the impact of voltage reduction (when applicable).

**Section 3
Island Peak Demand Information
Previous Day Actual Peak and Current Day Forecast Peak**

| | | | |
|-------------------|--|-------|----------|
| Sat, Feb 24, 2018 | Actual Island Peak Demand ⁸ | 09:25 | 1,468 MW |
| Sun, Feb 25, 2018 | Forecast Island Peak Demand | | 1,555 MW |

- Notes: 8. Island Demand / ML Exports (where applicable) is supplied by NLH generation and purchases, plus generation owned and operated by Newfoundland Power and Corner Brook Pulp & Paper (Deer Lake Power, DLP).